

**SENFENG** LEIANG  
LASER

Laser Cutting Equipment

Technical Solutions

SF3015G

1500W

## I. Introduction of 3015G

### 1. Introduction



SF3015G fiber laser cutter reaches the top level in China, which is customers' best choice in metal industry. The bed is welded by precise welding process after annealing and aging treatment, and the beam is airborne aluminium castings. For the more, the running speed of the machine can reach 80 m/min.

## Technical Parameters

Model	SF3015G
Working size	3000mm*1500mm
X-axis travel	3000mm
Y -axis travel	1500mm
Z -axis travel	120mm
Laser power	1500W
X/Y Axis positioning accuracy	±0.05mm/m
X/Y Axis repeated positioning	±0.02mm
Maximum velocity of movement	80m/min
Machine weight	2200KG
Outline size	4600mm*2460mm*1360mm

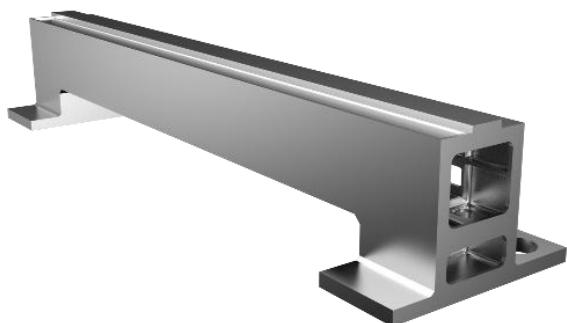
## 2. Characteristics

### Strong Machine Bed

High temperature annealing  
to reduce internal stress and  
deformation



Structural optimization, the perfect  
integration of worktable and bed, knife  
directly mounted on the bed, integrated  
bed, avoid shaking



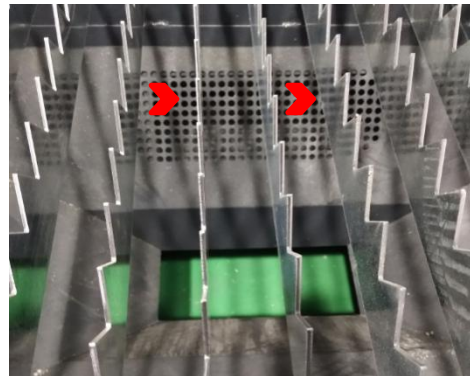
### Stable Beam

Integral die-casting beam, high  
precision, not easy to deform, long life

The appearance of laser head cover is beautiful, which is helpful for observing red light and cooling, cleaning dust, avoiding long-term high temperature and damaging internal devices.



Exhaust Outlet  
Push-pull partition  
smoke, combined  
with upper and lower exhaust



Installation of cutter blade dislocation  
insertion, firm installation, not easy to  
loosen and fall off

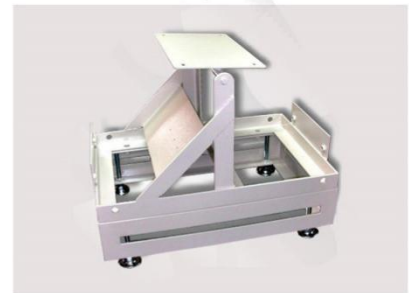
## Application & Capability

1.Cutting materials: carbon steel, stainless steel, aluminum alloy, brass, galvanized steel;

2.Cutting range: 0.5-14mm carbon steel, 0.5-5mm stainless steel, 0.5-4mm aluminum alloy, 0.5-3mm brass;



3.Applied industries: rail transit, automobile, machinery, electrical manufacturing, elevator manufacturing, household appliances, kitchen and sanitary ware, advertising, and other machinery manufacturing and processing industries.



## Cutting Parameters

1500W cutting parameters				
Material	Thickness(mm)	Cutting Speed (m/min)	Gas	Note
Carbon Steel	1	15-20	N2	
	2	6.0-7.0	O2	
	3	4.0-4.5	O2	
	4	3.0-3.5	O2	
	5	2.2-2.8	O2	
	6	1.4-1.8	O2	
	8	1.2-1.6	O2	
	10	1.0-1.3	O2	
	12	0.8-1.2	O2	
	14	0.6-0.8	O2	
	16	0.5-0.6	O2	
Stainless Steel	1	20-25	N2	6mm cutting with oxygen
	2	7.0-9.0	N2	
	3	4.5-5.0	N2	
	4	2.5-3.3	N2	
	5	1.2-1.6	N2	
	6	0.8-1.0	O2	
Aluminium	1	15-21	N2	High anti-material Need to be cautious
	2	6.0-9.0	N2	
	3	2.0-4.0	N2	
	4	1.0-1.2	N2	
	6	0.6--0.9	N2	
	1	12.0-13.0	N2	High anti-material





Electrical consumption	Bed machinery	3KW	3KW	3KW
	Dust exhausting fan	1.5KW	1.5KW	1.5KW
Wearing parts		0.07\$/H	0.07\$/H	0.07\$/H
Air consumption		0	2.17\$/H	8.7\$/H
Power		24.8KW	13.8KW	13.8KW
Total consumption (60% cutting efficiency)		15KW/H	8.3KW/H	8.3KW/H
Total cost (0.15\$/kwh)		2.31\$	3.55\$	10.27\$

## II . Feng Cloud



Client users display dynamic graphics of real-time data through browser, allowing to develop and maintain remote engineering in client if they have sufficient privileges. Customers use mobile phones, PAD and other devices, real-time display of monitoring interface and text mode to change data values, confirm alerts and so on.

